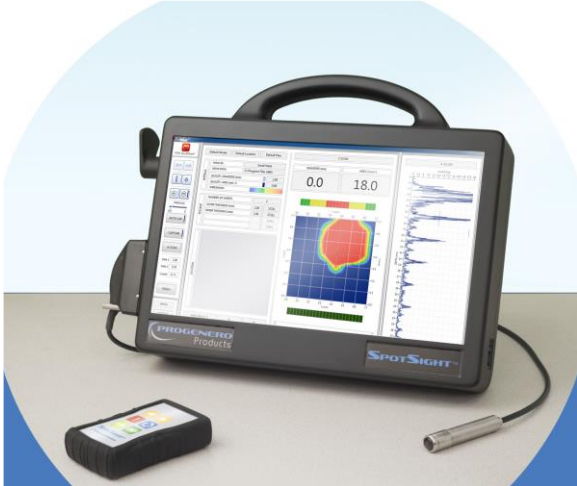


Specifications



Dimensions: 424mm W x 334mm H x 109mm

Operating System: Windows 10

Processor: Intel i5-4200U

RAM: 4 GB DDR3 SODIMM

Hard Drive: 120 GB mSATA SSD

User Interface:

15.6" FHD 1920 x 1080 Touch Screen display

Intel HD 4400 Graphics Controller

Keyboard & mouse

Wireless Remote

Communications:

wLAN Wireless Ethernet 802.11 g/n

Bluetooth v2.1 Mini PCIe

Environmental:

Power: 90VAC to 264VAC, 47-63Hz

Temp.: Operating 0°C to 35°C

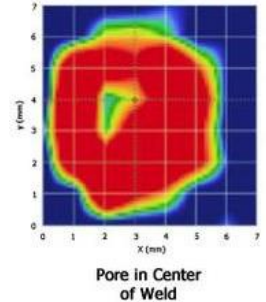
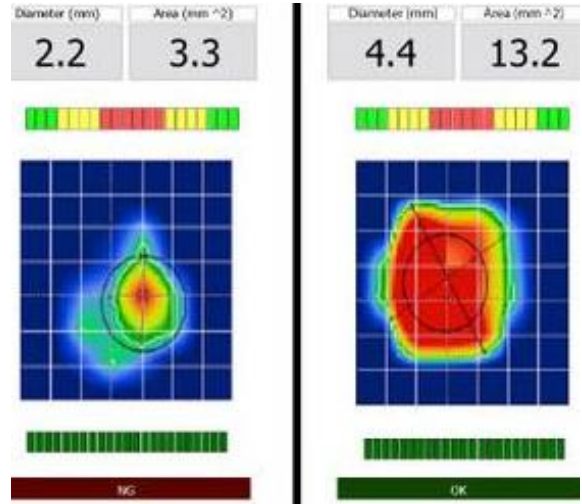
Storage Temp: -20°C to 60°C

Humidity: 10% to 90% without condensation

External Ports:

HDMI Display

USB 2.0



Probe:

64 Channel spherical array tip

Matrix Diameter: 8.70 mm

Matrix Pitch: 1.1mm

Cable: 3 meters

Frequency: 12MHz

Flexible Membrane: 0.5mm

Couplant:

Water (**no gel couplant required*)

Matrix Phased Array:

16/128 Phased Array electronics

Electronic Beam Steering and Focusing

Capable of using up to 128 element probes

Capable of operating up to 20 MHz MPA

Transducer

Weldability Relevant Information:

RSW Diameter Measurement: 2.5mm up to 8.0mm

Minimum Total Stack-up Thickness: ~0.5mm

Maximum Total Stack-up Thickness: 6mm

Inspection Speed: as fast as 6 Sec / weld