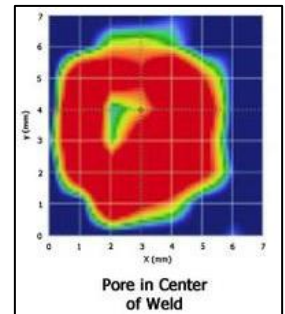
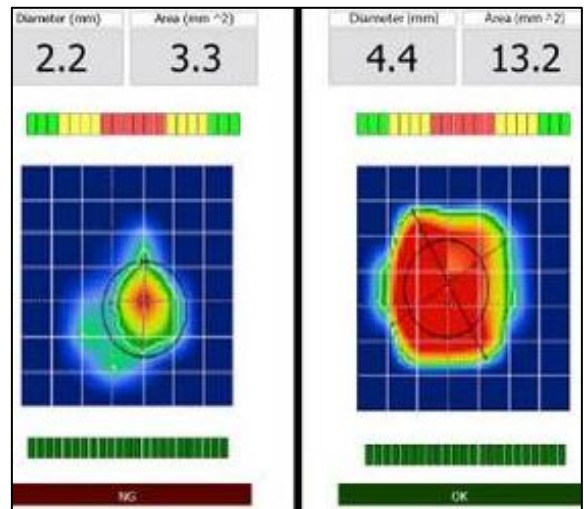


System Specifications



- | | |
|--------------------------|---|
| GEL COUPLANT FREE | - no gel couplant required to buy, use, or cleanup |
| MINIMAL TRAINING | - users are productive within 1 day |
| FAST PROCESSING | - instantaneous results (as little as 5 seconds/weld) |
| ACCURATE RESULTS | - shown on display and captured to memory |

User Interface:

Probe with 3 meter cable
Remote (wireless)
15.6" Touch Screen display
Keyboard, Mouse

Computing:

Windows 10
HDMI, USB, Wi-Fi, Bluetooth
wLAN Wireless Ethernet 802.11
Intel i5-4200U
4 GB RAM, 120 GB hard drive

Environmental:

Power: 90VAC to 264VAC, 47-63Hz
Temp.: Operating 0°C to 35°C, Storage: -20°C to 60°C
Humidity: 10% to 90% without condensation

Dimensions:

424mm W, 334mm H, 109mm D
16.7" W, 13.15" H, 4.3" D

Probe:

Frequency: 12MHz
Flexible Membrane
Matrix Pitch: 1.1mm
64 elements in spherical array tip
Cable: 3 meters

Couplant:

Water (**no gel couplant required*)

Ultrasonic Electronics:

16/128 Matrix Phased Array electronics
Electronic Beam Steering and Focusing
Capable of 128 element probes
Capable of operating up to 20 MHz MPA

RSW Measurement abilities:

- Diameter: 2.5mm to 8.7mm
- Stack-up Thickness: 0.5mm to 6mm
- Inspection Speed: as fast as 5 Sec / weld